
Installation instructions

Hardened Wood Flooring

woodura®

REINFORCED WOOD SURFACE TECHNOLOGY

The patented Woodura® surface technology is based on fusing a thin sheet of wood with a Compositek™ core through a powder mix layer. The powder mix perfectly fills up the natural openings of the wood and enhances the wood appearance. It also eliminates the need for wood-filler and creates a significantly stronger surface with a hardness three times greater than a traditional solid wood floor.



LOCKING SYSTEMS

www.valinge.se

valingeflooring.com

BJELIN WOODURA XXL

OAK MISTY WHITE

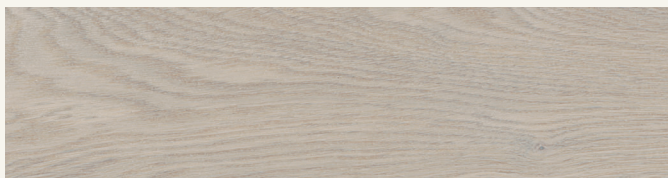


OAK NATURAL



BJELIN WOODURA XL

OAK POWDER WHITE



OAK MISTY WHITE



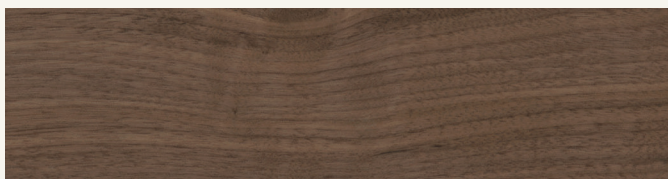
OAK EARTH GRAY



OAK NATURAL



WALNUT NATURAL



Installer/Owner Responsibility



We want you to have a pleasant experience installing our floors. All the important safety information is in these instructions — read them carefully, follow the instructions correctly, and keep them somewhere safe.

- It's the responsibility of the installer and owner to make sure that the work-site, sub-floor, and sub-surface conditions meet or exceed the requirements detailed in these instructions. The manufacturer does not accept responsibility for installation problems or inadequate product performance resulting from a failure to meet these requirements.
- All material needs to be carefully inspected for defects before installation — the warranty does not cover visible defects in material that has already been installed. Our flooring is manufactured in accordance with industry standards — allowing for manufacturing and natural deficiency tolerances of up to 5% of the total installation. To ensure you are satisfied with your product, it's important that you examine the color, finish, and style before the installation begins.
- Wood is a natural product — and each piece is unique. Color, grain, and other characteristics naturally vary from plank to plank and are not covered under warranty. Remember to examine all material before installing and, if you're unsatisfied, do not install the flooring and, instead, contact your dealer asap as the flooring warranty does not cover visible defects after installation.

❗ Important information

Building regulations, recommendations, and working methods are revised frequently — always check your current local regulations regarding sub-floor preparation and underfloor heating with the official trade organization, or a skilled craftsman, before starting your project.



Caution – Wood Dust

Cutting, sanding, or machining wood products produces wood dust. While wood products are not hazardous under OSHA Hazard Communication Standard 29, the International Agency for Research on Cancer (IARC) and the state of California have classified wood dust as a human carcinogen.

Important precautionary safety measures:

- *Equipment should be equipped with a dust collector to reduce airborne wood dust.*
- *Wear an appropriate NIOSH designated dust mask to reduce exposure to airborne wood dust.*
- *Avoid contact with eyes and skin.*
- *In case of irritation, flush eyes or skin with water for at least 15 minutes.*
- *In cases of severe irritation, seek immediate medical attention.*

Table of content

Pre-Installation & Jobsite Conditions

Important information.....	4
Fixtures and fittings	4
End joints in small areas	4
Door openings	4
Skirting boards	5
Expansion gaps	5
Skirting board thickness	6
How to calculate the skirting board thickness	6
Sub-floor	7
Vapor diffusion retarders	7
Underlayment material	8
Underfloor heating.....	8
Room climate.....	8
Full surface bonding	8

Final preparations

Check-list.....	9
Tools & Equipment.....	9

Floating floor Installation

Long and short side locking techniques	10
When angling is not possible	12
Reverse installation	12
Installation around pipes	12

Dismantling

Dismantle installed planks	13
How to use the dismantling tool.....	13

Looking after the floor

After installation	14
Floor treatment after installation	14
Regular cleaning	14
Maintenance.....	14

valingeflooring.com

The Woodura® word mark and 2G® / 5G® logos are registered trademarks owned by
Välinge Innovation AB and any use of such marks are under license.

Disclaimer: The colours of any flooring may differ in printed materials compared to the real product

Pre-Installation & Jobsite Conditions

Important information

Carefully read all the instructions *before* you begin the floor installation.

- Välinge Hardened Wood Floors can be installed in most places in the home and commercial areas. **They are not suitable for — and should be not installed in — humid or wet areas such as bathrooms or saunas.**
- Välinge Hardened Wood Floors can be installed over most hard surfaces, including resilient floor coverings such as LVT, SPC, VCT. **For installations over linoleum ensure that it is properly glued down, fixed, completely level, and has no loose areas.**

❗ Important information — DO NOT INSTALL OVER SOFT SURFACES

Instructions for transport and storage, indoor climate, and final preparation

- Packages should be transported and stored horizontally — acclimatize unopened packages in a dry, well-ventilated area of the job site for at least 48 hours before installation
- Maintain a room temperature of at least 64°F (18°C) and relative air humidity (RH) range between 35-65% during storage and installation.
- Only open the packages when you have started installation.
- Floor panels from several different packages can be mixed to get your preferred look.
- Examine each floor panel in daylight before installation to look for any damage or visible defects in color or texture. Problems with defects need to be brought to the attention of the supplier before installation.
- Use protective paper without a polymer layer on top of the floor during installation.
- Do not attach any adhesive tape to the floor.
- As the buyer, you are responsible for approving the product — even if it is installed by a professional installer. If the product is installed, it is seen to have been approved.
- The maximum floor width is 80 linear ft (25 linear meters) in either direction before a transition is required.
- In all areas bigger than 6727 ft² (625 m²) an expansion joint is essential to avoid gaps appearing in the joints due to changes in humidity and temperature.

Fixtures and fittings

- Never fix or bolt any kitchen units, fittings, or partitions to a floating floor — it will prevent expansion and contraction that occurs with seasonal changes and humidity. Instead, fix any fitting to the sub-floor first and then install the floating floor around them, leaving the appropriate space as an expansion gap.
- Modern kitchen units are usually fixed to the wall with support legs resting on the floor at the front of the units — this is generally ok for the floor. The exception is kitchens with heavy worktops such as marble or granite — where the support legs should not rest on the floor as it can restrict the expansion and contraction. As an alternative, chipboard of the same thickness as the floor can be installed under kitchen units.
- It is ok to install the floor under the fridge, freezer, and dishwasher — always ensure that they are placed on plastic drip trays to avoid unseen leaks.
- If the kitchen contains a wood-burning stove or similar, install chipboard or similar under the heat-resistant floor plate or hearth under the stove. The heavy stove rests on the chipboard and not the floor, preventing problems with expansion and contraction. The chipboard should be slightly smaller in dimensions of the hearth to act as an expansion gap when you install the floor around the stove. It will also make it easier to replace floor panels near the stove, if necessary.

End joints

- The floor needs to always be installed staggered, even in small areas — not only does this look better, but it's also essential for structural stability.
- Staggered end joints mean that no two adjacent end joints are aligned or close to each other — they should be staggered by at least 16" (400 mm) to prevent any gaps or other structural problems occurring.

Door openings

- When installing the floor through a door or archway, always divide the floor with an expansion gap and cover that with a threshold or molding.
- If there is an existing threshold that is fixed to the sub-floor, leave expansion gaps on either side of it. Alternatively, remove the existing threshold, install the floor, and replace the threshold — leaving an expansion gap underneath it.

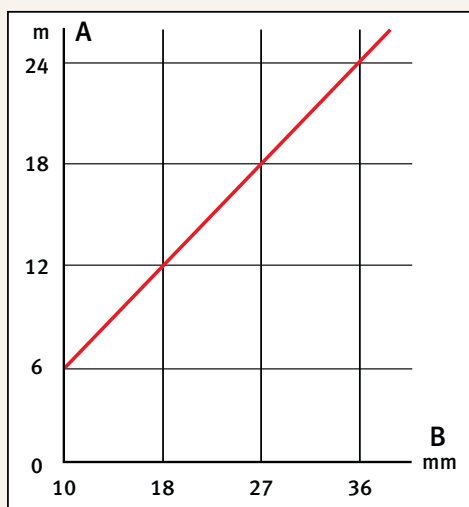
- If the threshold or molding is too high for the door to open and close freely after installing the floor, the door can be sanded or cut to fit.
- It may be possible to install the floor through door openings or aches without using a threshold or expansion gap, however, this type of installation requires a skilled professional.

Skirting boards

- Never attach the skirting boards directly to the floor as it can restrict the expansion and contraction and cause structural problems.
- Attach the skirting boards to the wall instead — using nails, screws, or adhesive.
- Mitre joints are recommended for the best results.
- The width of the expansion gap decides the thickness of the skirting board and not vice versa.
- Read the skirting board thickness section for more details.

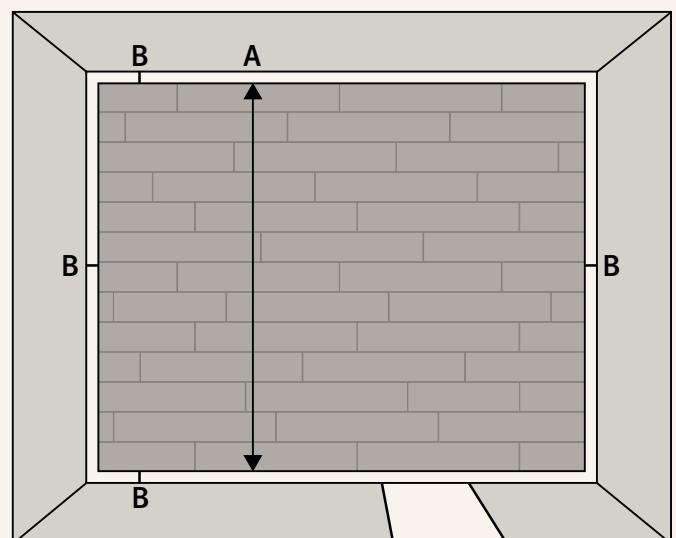
Expansion gaps

- Wood floors expand and contract due to temperature and seasonal changes. This is why an expansion gap is critical when you install near walls and other fixed objects — every edge needs an expansion gap between it and the floor.
- The floor needs to be able to expand at thresholds, door frames, pipes, pillars, stairs, tiles, other wooden flooring, etc.



Graph shows: A wood floor's movements as it absorbs and emits moisture.

- The floor will also contract in the winter, so the width of the skirting board needs to take this contraction into account.
- Remember that an expansion gap between two rooms or floor areas will be double the width of the expansion gap between the floor and a fixed object — such as a wall. This is because both floor areas need space to expand and contract.
- A room's RH (relative air humidity) value changes due to seasons and the floor needs to be able to expand and contract within this range.
- Calculate the width of the expansion gap by using the formula: $1.5\text{mm} \times \text{the room's width in meters} = B \text{ mm}$. In the illustration below: $1.5\text{mm} \times A \text{ meters} = B \text{ mm}$
- For example: a room that is 4 meters (13.1 ft) wide needs a 6mm (0.24 inch) expansion gap. Calculated as follows: $1.5\text{mm} \times 4 = 6\text{mm}$ (0.24 inch)
- As a rule of thumb, an expansion gap between 8—10mm (5/16—3/8") can be used for rooms less than 6 meters (19.7 ft) wide.

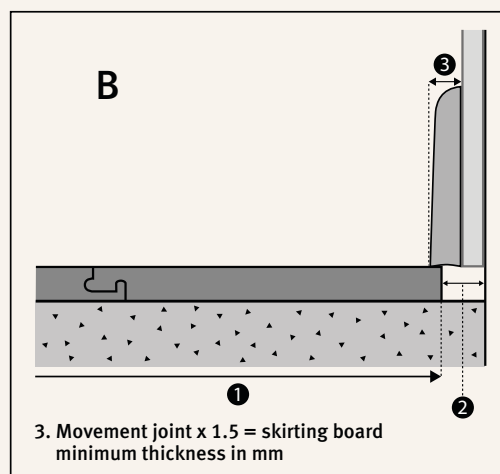
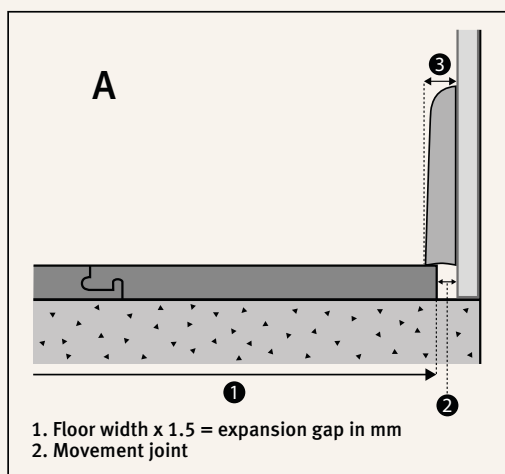


Skirting board thickness

- Remember that the width of the expansion gap decides the thickness of the skirting board and not vice versa.
- Larger floor areas will need a bigger expansion gap, which means that a thicker skirting board will also be needed.

Top Tip: If you're building new or renovating, one simple way to avoid overly thick skirting boards is to leave a gap between the plasterboards on the wall and the sub-floor. This will allow you to use the thickness of the plasterboard in your expansion gap measurement and will require a much thinner skirting board — as shown below in illustration B. would otherwise be necessary.

How to calculate the skirting board thickness



Minimum skirting board thickness for various floor widths

Floor width 1	Movement joint 2	Cover allowance	Skirting thickness 3
4 m (13,1 ft)	6 mm (0,24 in)	3 mm (0,12 in)	15 mm* (0,59 in)
6 m (19,7 ft)	9 mm (0,35 in)	5 mm (0,20 in)	15 mm* (0,59 in)
8 m (26,2 ft)	12 mm (0,47 in)	6 mm (0,24 in)	18mm* (0,71 in)
10 m (32,8 ft)	15 mm (0,59 in)	7 mm (0,28 in)	22 mm* (0,87 in)
12 m (39,4 ft)	18 mm (0,71 in)	9 mm (0,35 in)	27 mm* (1,06 in)
15 m (49,2 ft)	22 mm (0,87 in)	11 mm (0,43 in)	33 mm (1,3 in)
18 m (59,0 ft)	27 mm (1,06 in)	13 mm (0,51 in)	40 mm (1,56 in)

* Because a minimum of 5/16 - 3/8" (8-10 mm) movement joint is recommended.

Sub-floor

- Hardened wood floors can be installed on almost any type of subfloor — for example, wooden or cement concrete floors.
- Make sure the sub-floor is level, flat, dry, and clean.
- Any unevenness in height greater than 1/16" over a length of 6 ft needs to be leveled — use patching or leveling compound or ground/sand the area.
- Wood subfloors must have a moisture content (MC) less than. 13% at 68°F (20°C).
- Concrete or slab subfloors must have a maximum relative humidity (RH) of 80% RH at 68°F.

Vapor Diffusion Retarders (VDR)

❗ Important informationn — A VAPOR DIFFUSION RETARDER (VDR) NEEDS TO BE INSTALLED.

Vapor Diffusion Retarders are important to control moisture in floors. They come in two classes — Class I & Class II and are obligatory for certain types of subfloors when installing a floor on top.

Class I are to be used on the following:

- Concrete or slab subfloors
- Wood subfloors over concrete
- Screed or sleeper systems
- Radiant heat systems (underfloor heating)

The Vapor retarder needs to be at least 0.2 mm thick, age-resistant PE-foil (6 mil polyethylene film, foil). The foil needs an 8" (20 cm) overall between the joints and needs to be taped and folded up at each wall. Once the skirting boards are installed, the retarder will be trimmed to fit.

- If the RH in the substrate is over 80%, the vapor diffusion retarder will not protect against moisture sufficiently.

Class II is to be used on the following:

- Wood subfloors over an unconditioned space
- Lightweight concrete mix or gypsum-based topping compounds
- Existing floor covering such as ceramic, terrazzo, slate, and marble installed on concrete

A ventilated moisture barrier — for example, from manufacturers like Platon and Matak — is recommended if there is a risk of additional moisture or the RH in the subfloor is over 80% and needs to be installed following the manufacturer's instructions.

- Hardened wood floors installed on this type of substrate require a load distribution board — such as masonite, plywood, or chipboard — with a minimum thickness of 0,24" (6 mm) on top of the moisture barrier.

❗ Important information — NO VAPOR DIFFUSION RETARDER (VDR) IS NEEDED ON TOP OF WOOD SUBFLOOR THAT HAS A CLASS I or II VAPOR RETARDED ON INSTALLED ON THE UNDERSIDE OF THE JOISTS.

- Installing the floor on an existing floor covering — such as vinyl, linoleum, adhered cork, or resilient flooring — may not require a vapor retarder.

📖 For more information about vapor diffusion retarders, please read: NWEA Guidelines on underlayments and moisture control at [NWEA.org](https://www.nwea.org)

Underlayment

- Installing an approx 2mm thick underlayment is recommended for noise reduction.
- An underlayment material with a compressive strength of at least 60 kPa is recommended.
- The underlayment must be installed on top of the vapor retarder.

❗ Important information — Certain Class I underlayment sheet/vapor retarders may include 6-mil polyethylene film.

Underfloor heating

- Hardened wood floors can be installed on water-based or electrical floor heating systems.
- The floor heating system must be flat and distributed evenly in the subfloor.
- A room sensor (thermostat) and a floor sensor (for maximum temperature limitation) must be installed to prevent the surface temperature from exceeding 80°F (26°C).
- Underfloor heating must never be installed under kitchen units or similar installations.
- For water-based floor heating systems with the pipes positioned in profiled particle floorboards, covering with heat-distributing aluminum sheets and a 0,24" (6 mm) load-bearing profiled — for example, tongue/groove — particleboard or plywood is recommended

❗ Important information — ALL FLOOR HEATING SYSTEMS REQUIRE A CLASS I (PE-FOIL) VAPOR RETARDER BETWEEN IT AND THE UNDERLAY MATERIAL OF THE SUBFLOOR.

📖 For more information about underfloor heating, please read: NWFA Guidelines on radiant heat standards at NWFA.org

Room climate

- Ambient climate for wood floors should be 35-65% relative air humidity (RH) at 68°F (20°C).
- A low RH can cause small cracks to appear in the joints between the planks.
- An indoor air conditioner for temperature and vapor is the optimal way to control the room — especially during the winter.
- Complaints regarding unevenness, joint openings, or board size cannot be inspected if the room climate RH and temperature are outside the limits — it can be inspected only after the room climate has had normal values for at least 4 weeks.

- Wood is hygroscopic — meaning that it absorbs moisture — and is affected by fluctuations in the room climate RH and temperature. The changes normally resolve once the room climate returns to the recommended levels.
- Underfloor heating will cause increased shrinkage in a wood floor due to the drying effect. During winter, humidifiers are recommended.

Full surface bonding

- As an alternative to a floating installation, Hardened Wood floors can be installed with full-surface bonding using an approved adhesive.
- All floor installation instructions and adhesive manufacturers' instructions must be followed carefully when installing floors with full surface bonding.

Recommended full surface bonding products

- Bona: Bona Titan — plus Bona R590 when a moisture barrier is also required.
- Bostik: Bostik Maxi Bond Parquette — contact Bostik technical support when a moisture barrier is also required.

Both these products are an elastic 1-component silane adhesive for wooden floors.

Recommendations for adhesives are based on extensive testing by the manufacturers. Test the adhesive carefully before installing flooring or contact the adhesive manufacturer's technical customer service if you have any questions.

❗ Important information — WE DO NOT ASSUME LIABILITY OR ACCEPT WARRANTY CLAIMS FOR ANY LOSSES INCURRED BY USING AN ADHESIVE INCORRECTLY.

📖 For more information about full surface bonding, please read: Installation instructions glue down Hardened wood floors at www.valingeflooring.com

Final preparations



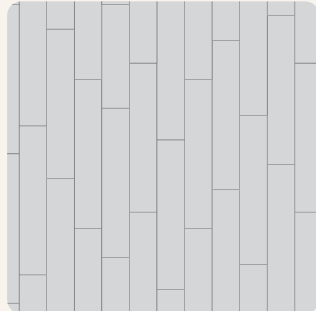
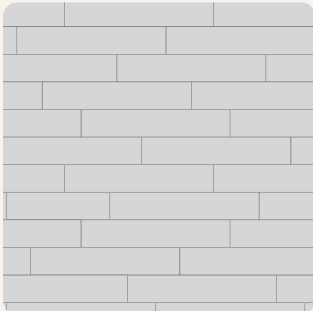
Check-list:

- Remove the old skirting boards
- Remove or trim existing door casings before installing the floor
- Inspect the planks for color, finish, milling, and grade
- Remove any damaged planks
- Leave the correct expansion gap (calculated on page 6) between the floor and all fixed structural elements such as walls, thresholds, pillars, or pipes
- Measure the room and calculate the number of rows required
- Choose the installation direction to suit the room's proportions — as a general rule, lay the floor in the same direction as the main light source



Recommended tools and equipment:

- Safety glasses
- NIOSH approved Dust Mask
- Vacuum cleaner
- ½ inch Spacers (see table for gap distance)
- Sliding miter saw, jigsaw, laminate flooring guillotine (such as Mega STRATICUT 400), or hand saw
- Metal or Diamond Saw Blade
- Fine pencil
- Tape measure
- Set square 45° & 90°
- Moisture Meter
- PE Film (Floating)
- White glue (D3) for adjustment at radiator pipes

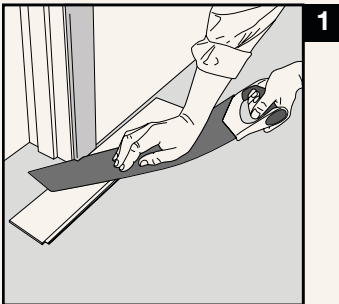


Floating floor installation

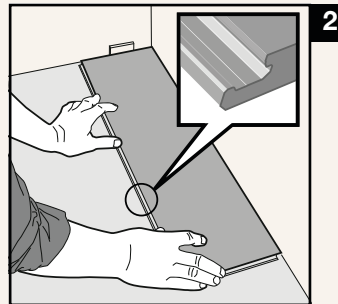
Long and short side locking techniques

- The long sides of the planks are connected by angling the tongue into the groove — where the lower lip has a locking design
- The short sides of the planks are connected with Välinge Innovation's patented 5G® Fold Down™ locking system and simply fold down — locking with a reassuring “click”

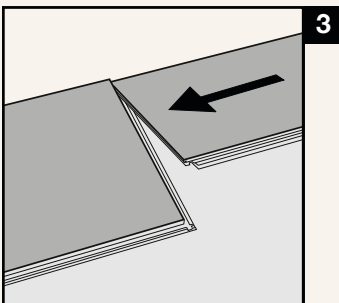
📺 Visit www.valingeflooring.com/downloads for video instructions



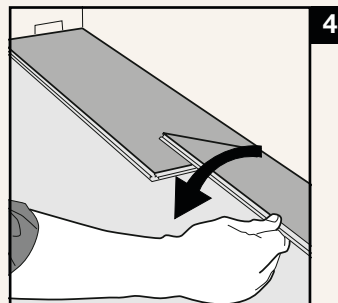
Door frames can be removed and raised, but it's usually easier to cut them. Use a loose plank as a template and saw off the excess. Ensure that the floor is not pressed between the subfloor and the door frame.



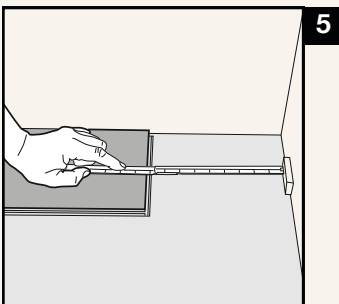
Now it's time to lay the first plank in the first row. Start in a left corner and lay a plank with the tongue side facing the wall. Now insert a wedge between the wall and the plank's left short side so there is a gap at least ½" (8-10mm) wide.



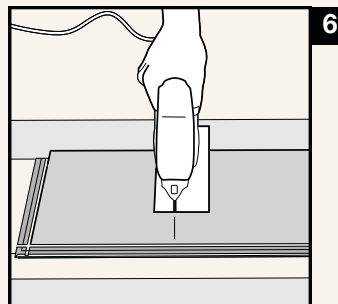
Position the second plank to the right short side of the first plank.



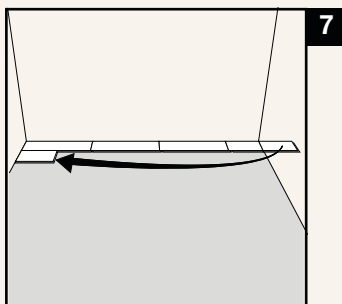
Fold down the second plank, making sure it's positioned tightly to the first plank — press down firmly and listen for the click that means it's locked in place.



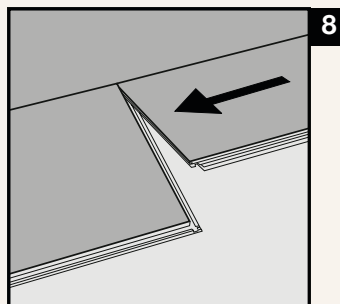
Continue installing the first row. When you are close to the wall on the right side, place a wedge at the wall and measure the length to determine the size of the row's last plank.



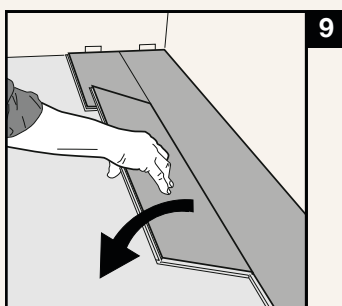
Cut the row's last plank to size. If you are using a jigsaw, cut it face down. If you are using a hand saw, cut it face up.



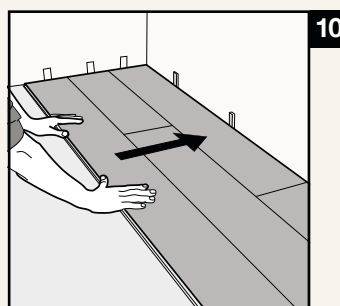
To begin the second row, use the remainder of the cut plank you used to finish the first row.



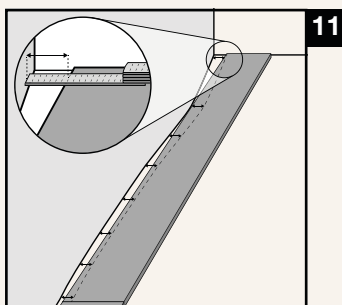
Position the second plank to the right short side of the first plank.



Fold down the second plank, making sure it's positioned tightly to the first plank — press down firmly and listen for the click that means it's locked in place.

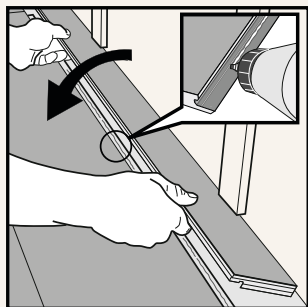
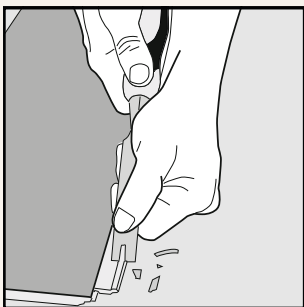


Continue to install the row as before. When you have completed 2–3 rows insert wedges between the wall and the first row so there is a gap at least ½" (8-10mm) wide.



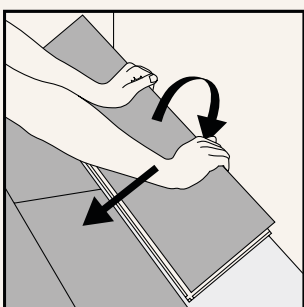
The first and last row may need to be adjusted if the wall is uneven. To achieve this, trace the wall profile to the first or last plank, cut, and install.

When angling is not possible

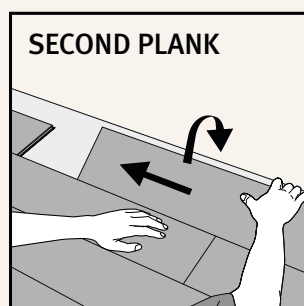


Remove the locking element/hook as shown in the diagram. Use white PVAc glue to connect the planks. Press/place wedges between the glued strip and the wall.

Reverse installation

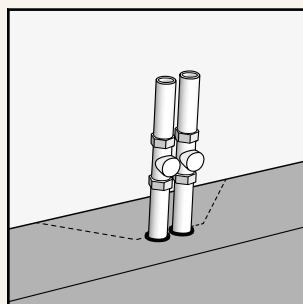
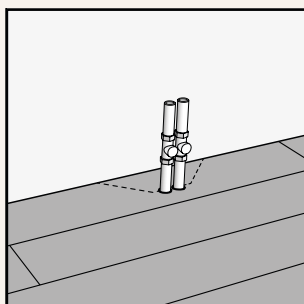
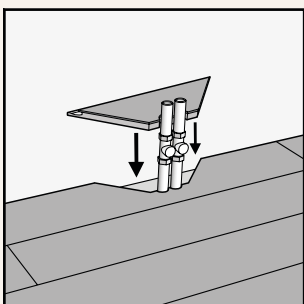
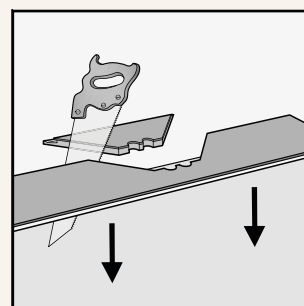
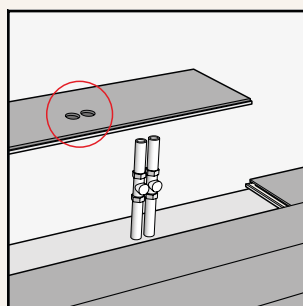
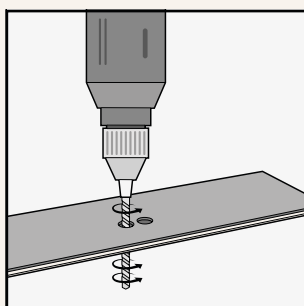
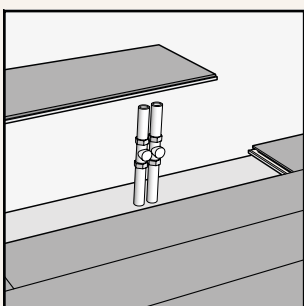


1 When installing in reverse, start from the left. Angle the long side groove into position at the tongue of the adjacent plank from the previous row and fold down to lock into place.



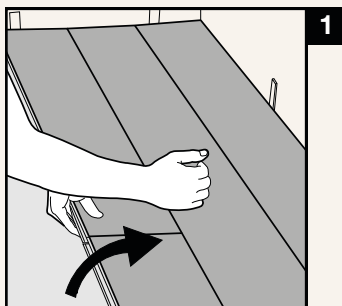
2 Angle the long side groove of the second plank into position at the tongue of the adjacent plank from the previous row and fold down. Now slide the second plank to the left to position it to the right short side of the first plank. Press down firmly and listen for the click that means it's locked in place.

Installing around pipes

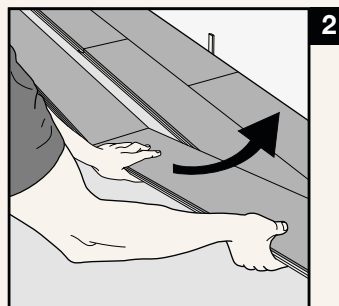


Mark the center point of the pipes on the plank. If the required expansion gap is 10mm, drill holes 20mm bigger than the pipe diameter. Cut as shown below. Apply white glue and install the floor pieces. Cover the holes with pipe collars or fill with a joint sealer.

Dismantling an installed plank



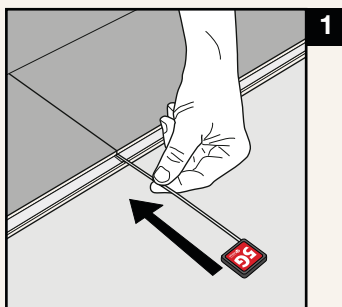
When a plank is locked, it is not possible to dismantle it by hand. Lifting up and knocking gently on a plank will unlock the row — fold up to fully release the long side.



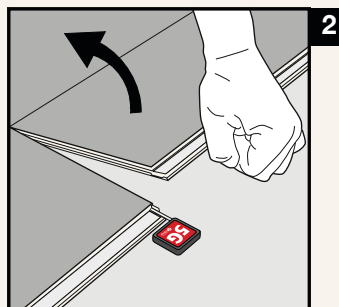
Once the whole long side is released each plank can be dismantled by angling the short sides up vertically.

Using the dismantling tool

Another way to disassemble the plank is by using our 5G dismantling tool.



Position the dismantling tool into the gap between the tongue and groove on the short end of the plank. Push the dismantling tool into the short side.



The short side should now be unlocked and the plank can be lifted.

Looking after the floor

After installation

- Once the floor is installed, it is not recommended to place carpets on the floor for the first few months.
- If the floor has lighter colors from rugs or other covering, it will change color quickly when they are exposed to daylight.
- Use protective pads on the base of furniture legs and protective mats under caster chairs with hard wheels.
- Always use a protective mat at entrances.

Floor treatment after installation

Pre-lacquered Hardened Wood floors do not need any surface treatment after installation. Cleaning the floor before use is recommended — use a hardwood floor cleaner for lacquered floors, such as Bona Hardwood Floor Cleaner.

❗ Important information — ALWAYS USE A DETERGENT SPECIFICALLY FOR UV ACRYLIC WEAR LAYER HARDWOOD FLOORS. NORMAL SOAP CAN LEAVE A FAT RESIDUE ON THE FLOOR SURFACE — MAKING IT DIFFICULT TO CLEAN.

Pre-oiled Hardened Wood floors in homes do not need any surface treatment after installation. Cleaning the floor before use is recommended — use a hardwood floor cleaner for oiled wood floors, such as Bona Hardwood Floor Cleaner.

❗ Important information — ALWAYS USE A DETERGENT SPECIFICALLY FOR OILED HARDWOOD FLOORS. NORMAL SOAP CAN LEAVE A FAT RESIDUE ON THE FLOOR SURFACE — MAKING IT DIFFICULT TO CLEAN.

❗ Important information — IN COMMERCIAL AND HIGH-TRAFFIC AREAS SHOULD RECEIVE ADDITIONAL SURFACE TREATMENT IMMEDIATELY FOLLOWING INSTALLATION.

1. CLEAN THE FLOOR AND MAKE SURE IT IS DUST FREE
2. TREAT THE FLOOR WITH A HARDWAX OIL FROM OSO

Daily cleaning

For daily cleaning use mainly dry methods, such as vacuum cleaner, dust mop or microfiber mop. Stains/dirt can easily be removed by using a magic melamin sponge.

Regular cleaning

Clean the surface with a microfiber cleaning pad and a Hardwood floor cleaner for lacquered wood floors or oiled wood floors (e.g Bona Hardwood Floor Cleaner) to clean the floor.

Maintenance

Pre-lacquered Hardened Wood floor

When needed, a hardwood floor refresher for lacquered wooden floors, such as Bona Hardwood Floor Refresher, can be used to freshen up the surface and remove micro-scratches.

A floor refresher is suitable for restoring a worn lacquer — giving a protective layer for easier cleaning and maintenance. It is not, however, a substitute for a refinish.

❗ Important information — USING A HARDWOOD FLOOR REFRESHER WILL MAKE A LACQUERED FLOORS GLOSS VALUE INCREASE. THE MORE USED, THE HIGHER GLOSSIER IT WILL BECOME AND IT WILL MORE NOTICEABLE ON A MATT LACQUERED FLOOR. MAKE SURE THAT THE FLOOR IS CLEAN FROM POLISH, WAX, AND GREASE STAINS BEFORE APPLYING THE REFRESHER.

Pre-oiled Hardened Wood floor

Pre-oiled floors should be maintained regularly using a maintenance oil or hardwax oil from Osmo.



2G®, 5G® and Woodura® are trademarks for patented technologies – invented, registered and owned by Välinge Innovation AB. Use of the marks or technologies is under license.



valingeflooring.com



Manufactured in Sweden
www.valingeflooring.com



Installation instructions – Glue Down Hardened Wood Flooring

woodura®

REINFORCED WOOD SURFACE TECHNOLOGY

The patented Woodura® surface technology is composed of a thin sheet of wood fused with a Compositex™ core through a powder mix layer. The powder perfectly fills any natural gaps in the wood and enhances the appearance. It also eliminates the need for wood filler and creates a significantly stronger surface with a hardness three times greater than a traditional solid wood floor.



LOCKING SYSTEMS

www.valinge.se

valingeflooring.com

The Woodura® word mark and 2G® / 5G® logos are registered trademarks owned by Välinge Innovation AB and any use of such marks are under license.

Installer/Owner Responsibility

It is extremely important that you read and understand this information completely prior to starting, since improper installation can void the warranties. It is the responsibility of the installer and owner to ensure that the job site environment, subfloor and subsurface conditions involved meet or exceed all requirements as outlined in these installation instructions. The manufacturer declines all responsibility for product performance or installation failure should these environmental conditions not be met.

Inspect ALL material carefully for defects prior to installation. Material installed with visible defects is not covered under warranty. Flooring is manufactured in accordance with industry standards, which allows manufacturing and natural deficiency tolerances up to 5% of the total installation. Examine the flooring for color, finish, and style before installation to ensure you have the correct product.

Wood is a natural product that can vary in color, grain and natural characteristics from plank to plank and is to be expected. We do not warrant against these natural variations from plank to plank. If not satisfied with the flooring prior to installation, contact your dealer. DO NOT install the flooring.

Accepting or rejecting the material must be done prior to installation. Flooring warranties DO NOT cover materials with visible defects once they are installed.



Caution – wood dust

Cutting, sanding or machining wood products produces wood dust. While wood products are not hazardous under OSHA Hazard Communication Standard 29, the International Agency for Research on Cancer (IARC) and the state of California have classified wood dust as a human carcinogen.

Precautionary measures: *Equipment should be equipped with a dust collector to reduce airborne wood dust. Wear a NIOSH approved dust mask to reduce exposure to airborne wood dust. Avoid contact with eyes and skin. In case of irritation, flush eyes or skin with water for at least 15 minutes. In cases of severe irritation, seek immediate medical attention.*

Table of contents

Pre-Installation & Job Site Conditions

Important.....	4
Subfloor.....	4
Underfloor heating	4
Room climate	5
Glue down installation	5
Recommended products.....	5

Preparations

Checklist.....	6
Tools & Equipment needed	6

Installation instruction

Layout	7
Installation	7
Subsequent rows	9
When angling is not possible	10
Installation around pipes.....	10

After installation

Installation treatment.....	12
Cleaning	12
Maintenance.....	12

valingeflooring.com

The Woodura® word mark and 2G® / 5G® logos are registered trademarks owned by
Välinge Innovation AB and any use of such marks are under licence.

Disclaimer: The colors of any flooring may differ in printed materials compared with the actual product

Pre-Installation & Job site Conditions

Important

Read through the entire glue down installation instructions carefully before you begin to install the floor.

- Välinge Hardened Wood can be installed in all indoor areas and in most commercial premises, but is not suitable for installation in humid/wet areas (bathrooms, saunas, etc).
- Välinge Hardened Wood Flooring can be glued to any professionally installed subfloor. This includes concrete and screed, as well as chipboard or plywood boards.
- Transport and store the cartons horizontally. Unopened cartons should be acclimatized at the job site in a dry, well-ventilated area for a minimum of 48 hours.
- During storage and installation, maintain a room temperature of at least 64°F and a relative air humidity (RH) range of 35-65%.
- Open the packages only when you begin installing the floor.
- Mix planks from several packages before installation, in order to achieve the desired floor pattern.
- Check all planks in daylight before installation for recognizable faults in color and texture.
- Place a protective paper, without a polymer layer, over the floor surface during the installation.
- ***Please note that no tape should be attached to the floor.***
- All concerns regarding deviations on the product should be discussed with the supplier before installation.
- When a product is installed by either yourself or a skilled craftsman, you as a buyer are considered to have approved the product.
- Any installed plank is an approved product.

Subfloor

Hardened Wood Flooring can be glued to any professionally installed subfloor. This includes concrete and screed, as well as chipboard or plywood boards.

Ensure that subfloor is level, flat, dry, and clean. Any deflection in the subfloor greater than 1/16" over 6' length should either be smoothed with patching or a leveling compound or ground/sanded down mechanically.

Concrete/slab subfloors:

The surface temperature of the subfloor should be a minimum of 59°F.

- Subfloors of concrete should have max 80% relative humidity (RH) at 68°F.


Wood subfloors:

Prepare the subfloor for installation, re-nail any loose areas that are squeaky. Sand or plane any raised areas and fill any low areas.

- The moisture content of wood subfloors must be less than 13% Moisture Content (MC) at 68°F.

Install a Class I liquid impermeable vapor retarder over the slab when calcium chloride readings are greater than 3 lbs, relative humidity readings are greater than 80%, or calcium carbide readings are greater than 2.5%. In on- and below-grade applications, due to the ever-changing moisture variability with a concrete slab, and the likelihood of sub-slab moisture barrier degradation over time, a Class I impermeable vapor retarder is always recommended.

After any necessary improvements have been made to the subfloor the Hardened Wood Flooring is ready for installation in accordance with the appropriate standards and technical specifications.

 ***For more information about vapor diffusion retarders, please read: NWFA Guidelines on Underlayments: Moisture Control NWFA.org***

Underfloor heating

Hardened Wood Flooring can be installed on water-based or electric floor heating systems. The underfloor heating system must be flat and well distributed in the subfloor. Both a room sensor (thermostat) and a floor sensor (for maximum temperature limitation) must be installed to prevent the surface temperature from exceeding 81°F. Underfloor heating must never be installed under kitchen cupboards or similar installations.

Water-based floor heating systems with the pipes positioned in profiled particle floorboards with heat distributing aluminium sheets must be covered with a loadbearing profiled (i.e. tongue/groove) particleboard or plywood, of at least 0.47" thickness.

📄 *For more information about underfloor heating, please read: NWFA Guidelines on Radiant Heat Standards NWFA.org*

Room climate

The ambient climate for wood floors should be 35-65% relative humidity (RH) at 68°F. At low RH, fine cracks can occur in the joints between the planks. The best way to control the climate is with an indoor air conditioner for temperature and vapor, especially during wintertime. If given limits for indoor climate parameters such as temperature and relative humidity in the air (RH) at the floor level, exceed or fall short, remarks on evenness, joint openings or board size cannot be reviewed.

The floor can be inspected when the room climate (temperature and RH) has been stable for at least four (4) weeks and has returned to normal values within the limits. Climate variations are natural and because of the hygroscopic material properties of wood and any changes will fully or partly revert when the room climate conditions fulfill the requirements above. Underfloor heating causes additional drying of the wood flooring material, which leads to extra shrinking. During wintertime (heating period) the use of humidifiers is recommended.

Glue down installation

Hardened Wood Flooring can be installed with full surface bonding using an approved adhesive as an alternative to floating installation. Please note that when installing floors with full surface bonding all floor installation instructions must be followed carefully at all times, as well as the general recommendations and instructions from the adhesive manufactures must be followed.

We recommend the following products:

Bona: Bona Titan

Bostik: Bostik Maxi Bond Parquette

Both these products are an elastic single-component silane-based adhesive for wooden floors.

If you need a moisture barrier we recommend using Bona R 590 together with Bona Titan. For Bostik Maxi Bond Parquette please contact Bostik technical support for information.

The recommendations for adhesives are based on extensive testing by the manufacturers. We recommend that you test the adhesive carefully before installing flooring or contact the adhesive manufacturer's technical customer service if you have any questions.

⚠ ***Note! We do not assume liability or warranty claims for any losses incurred in using an adhesive system incorrectly.***

- Always glued directly to the subfloor.
- Leave an expansion gap of 5/16 - 3/8" between the floor and all walls.
- The tongue and groove must NOT be glued.
- There must be no expansion breaks in the floor regardless of size.
- Do not apply more adhesive than can be "worked" in the course of 10-15 minutes.
- Apply the adhesive with a wide-toothed spatula. The width of the spatula's teeth is important.
- To obtain a good final result it is very important to be precise in the installation of the first rows of planks. Always place the planks in the adhesive in front of the previous row then push and rotate them into place along the side and end of each plank.
- Immediately clean off any adhesive spilled on the wood flooring during installation. Follow the adhesive manufacturer's recommendations.

Preparations

Checklist:

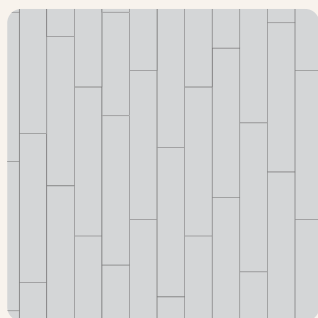
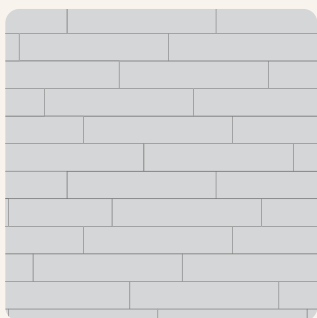


- Remove the old skirting boards
- Remove or cut off existing door frames before installing the floor
- Sweep or vacuum subfloor thoroughly
- Measure the room and calculate the number of rows required
- In narrow or long rooms, choose the installation direction to suit the room's proportions, usually lengthwise or in the main direction of light
- Do not open packages before installation!
- Inspect planks before installation and lay aside any with defects
- **Tip:** Dry-lay the first two rows to familiarize yourself with Hardened Wood Flooring

Tools & Equipment needed:



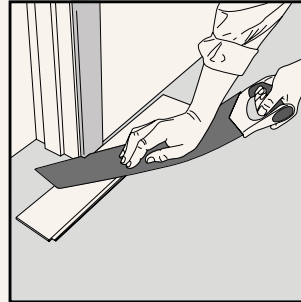
- Chalk line
- Straight edge
- Safety glasses and NIOSH approved dust mask
- Recommended spatula from the adhesive manufacturer
- Wood flooring adhesive
- Expansion wedges
- Sliding mitre saw or jigsaw or a laminate flooring guillotine such as Mega STRATICUT 400
- Metal or diamond saw blade
- Fine pencil
- Ruler
- Set square 45° & 90°



Installation instructions

Connect the long sides by angling the tongue into the groove (tapping the lower lip will lock it in place). Connect the short ends with the Välinge patented 5G® Fold Down locking system as you lower the plank down.

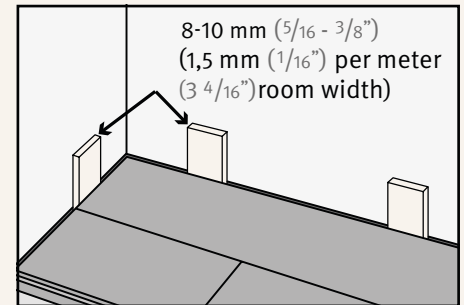
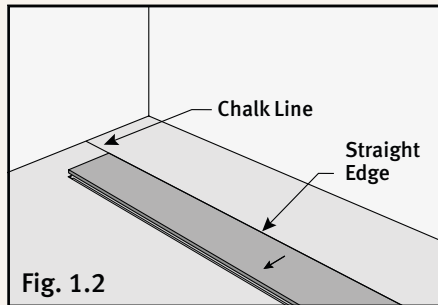
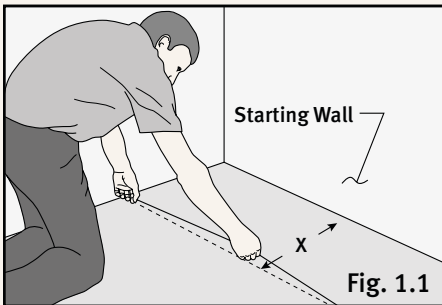
📺 Please watch: www.valingeflooring.com/downloads



❗ Tip!

Door frames can be removed and moved up, but cutting them is usually easier. Use a loose plank as a template and saw off the bottom of the frame. Make sure the planks are not wedged between the subfloor and the frame.

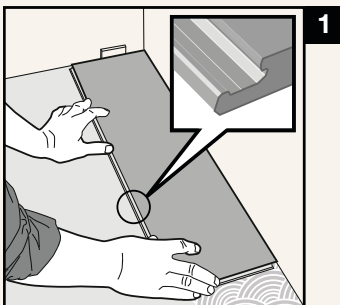
Step 1 - Layout



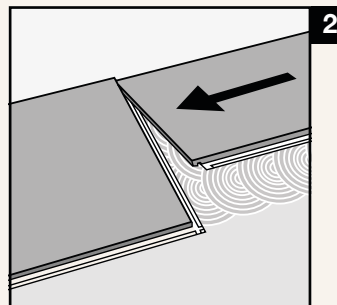
Using the starting wall as reference, snap a chalk line on the subfloor at distance X from the wall as shown in Fig. 1.1. Align the straight edge with the chalk line and secure to the subfloor.

We recommend a clearance to the wall of min. 1/2" per 3' 4/16" room width.

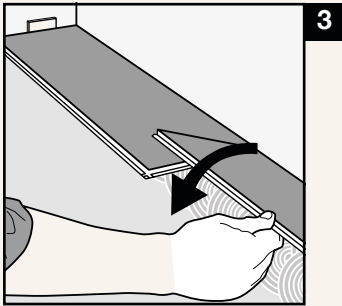
Step 2 - Installation



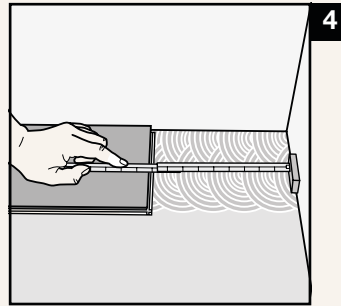
First plank, first row. Start in the left corner with the tongue side facing the wall and the long groove side directly up against the straight edge. Spread enough adhesive to cover one plank width. Use only as much adhesive as can be used during the manufacturer's maximum recommended time for keeping the container open.



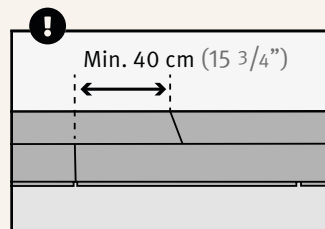
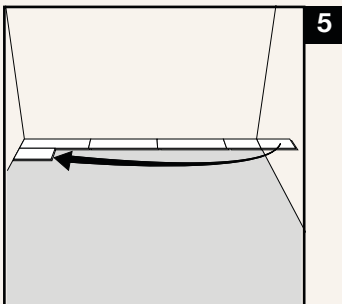
Second plank, first row. Line up the plank gently and tightly to the short end of the previous plank.



3 Lower the plank down in a single movement. Make sure the planks are tight against each other. Press down the plank.

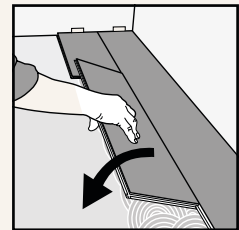
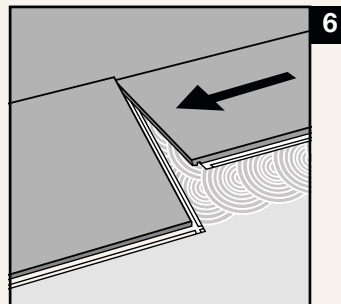


4 At the end of the first row, put a wedge to the wall and measure the length of the last plank to fit.

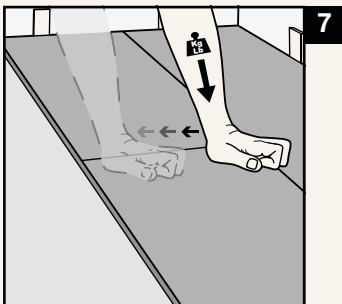


5 Start the second row with the offcut from the first row.

Note! There must be at least 16" between the short end joints of the planks.



6 Second plank, second row. Line up the plank gently and tightly to the short end of the previous plank. Lower the plank down in a single movement. Make sure the planks are tight against each other. Press down the plank.



Note! Ensure that the short end is connected.

Note!

- After the first 2-3 rows have been installed, ensure the expansion space between the planks and walls is aligned securely
- If recommended by the adhesive manufacturer, roll the flooring with 100 lb. roller to ensure contact between flooring and subfloor. Place a weight (e.g. unopened cartons) along the perimeters until the adhesive sets
- Remove the straight edge

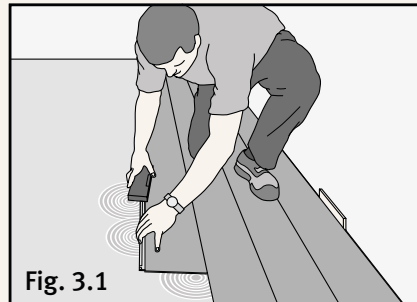
Step 3 - Subsequent Rows

Once the starting rows are firmly in place, apply the adhesive using the “wet lay” method. Do not apply more adhesive than can be used within the opening time of the adhesive. Immediately place the flooring in “wet” adhesive and proceed with installation.

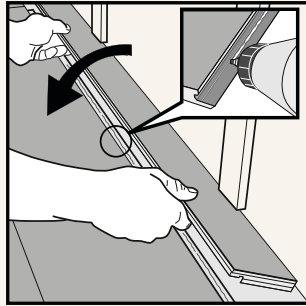
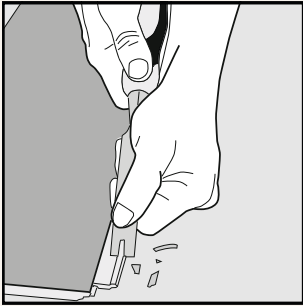
- Start each row with the cut-off end of last plank of the previous row.
- Ensure there is at least 16” between the plank joints at the short ends.
- Hardened Wood Flooring can be laid from both directions according to need.

Tip!

- After the first three rows are laid, have one installer work on installing flooring while others spread adhesive and cut planks as needed
- Installing Hardened Wood Flooring is easier when you work from the direction of already installed flooring, as shown in Fig. 3.1
- Working in this manner lessens the chance of accidentally transferring adhesive onto the flooring surface, thereby reducing clean-up time

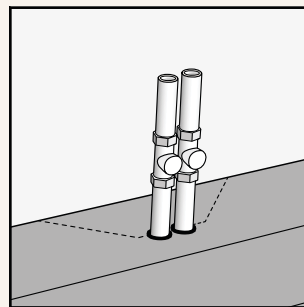
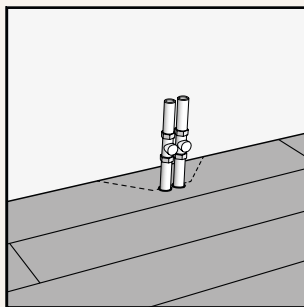
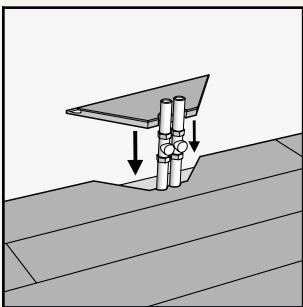
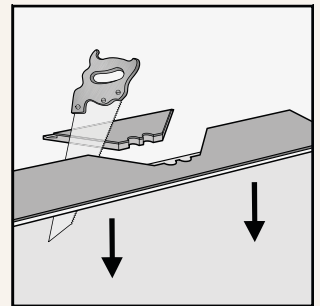
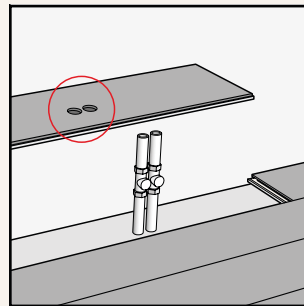
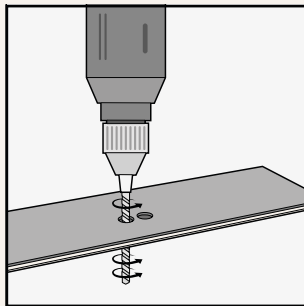
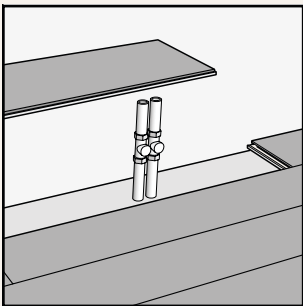


When angling is not possible



Remove the locking element/hook according to the picture.
Use white PVAc glue to connect the planks.
Position wedges between the glued plank and the wall.

Installation around pipes



Mark the center point of the pipes on the plank. Drill holes 1" bigger than the pipe's diameter (if gap distance selected is ½"). Cut according to the picture. Fix with white glue and replace the floor pieces. Cover the holes with pipe collars or fill with a joint sealer.

After Installation

- Do not lay rugs or carpets on the floor during the first months after installation. Areas beneath a rug will show up lighter than the rest of the wood floor, which will darken slightly when exposed to sunlight.
- Protective felt pads are recommended under furniture legs and protective carpets under castor chairs with hard wheels.
- Always use protective entrance carpets.

Installation treatment

Pre-lacquered floor:

Pre-lacquered hardened wood floors do not need any surface treatment after installation. But we recommend cleaning the floor before using it. Use a hardwood floor cleaner for lacquered wood floors (e.g. Bona Hardwood Floor Cleaner).

⚠ Note! Use detergent specially formulated for UV Acrylic Wear Layer hardwood floors. Normal soap may form a fatty coating on the surface which makes the floor more difficult to clean.

Pre-oiled floor:

Domestic areas

In domestic areas pre-oiled hardened wood floors do not need any surface treatment after installation. But we recommend cleaning the floor before using it. Use a hardwood floor cleaner for oiled wood floors (e.g. Bona Hardwood Floor Cleaner).

⚠ Note! Use detergent specially formulated for oiled wood floors. Normal soap may form a fatty coating on the surface which makes the floor more difficult to clean.

Commercial premises

⚠ Note! In commercial premises we recommend that the first periodic maintenance should be performed immediately after installation. Pre-oiled hardened wood floors installed in commercial premises must be given additional surface treatment to meet the requirements to which they are exposed.

Clean the floor of any dust from installation before starting the oil treatment. Use a hardwood floor cleaner for oiled wood floors (e.g. Bona Hardwood Floor Cleaner).

In commercial premises we recommend using hardwax oil from Osmo.

Daily cleaning

For daily cleaning use mainly dry methods, such as a vacuum cleaner, dust mop or microfiber mop. Stains/dirt can easily be removed by using a magic melamine sponge.

Regular cleaning

Clean the surface with a microfiber cleaning pad and a hardwood floor cleaner for lacquered wood floors or oiled wood floors (e.g. Bona Hardwood Floor Cleaner).

Maintenance

Pre-lacquered floor:

If necessary, a hardwood floor refresher for lacquered wooden floors (e.g. Bona Hardwood Floor Refresher) can be used to freshen up the surface and remove any surface scratches.

A refresher restores the surface of well-worn lacquer and gives a protective layer that simplifies cleaning and maintenance. A refresh is not a substitute for refinishing.

⚠ Note! Using a hardwood floor refresher increases the glossiness on lacquered floors. The more layers you put on, the higher the glossiness level. This is more evident on matt lacquered floors. The floor to be treated should be clean and free from polish, wax and any grease stains.

Pre-oiled floor:

Pre-oiled hardened wood floors need to be maintained regularly.

For maintenance treatment we recommend using maintenance oil or hardwax oil from Osmo.

How to take care of your Välinge hardened wood floors

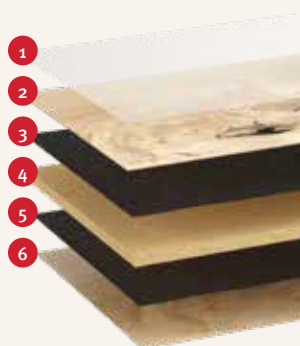


General information & recommendations

- Wood has hygroscopic characteristics, meaning it moves with natural changes of relative humidity: in the summer it normally swells and in winter it normally shrinks. When the wood shrinks, natural gaps between the boards appear. To prevent excessive movement and consequential damage to the floor, the indoor climate should have a temperature between 60° - 76° F and relative air humidity (RH) between 35 - 65%.
- Keep in mind that underfloor heating dries out the wooden floor more than, for example, radiators. When using underfloor heating, the surface temperature of the floor should never exceed 80° F. Relative humidity (RH) in the indoor air increases with everyday activities such as cooking, showering, etc. Green plants and, for example, aquariums provide a moisture supplement to the air. Relative Humidity (RH) can also be increased by using an air humidifier.
- Välinge Hardened Wood Floors must not be sanded. Sanding makes the flooring lose its protective UV acrylic top coat. For this reason, it is important to maintain and preserve the floor design so that the floor will maintain its beautiful appearance for many years.
- Place furniture feet pads with felt on office chairs, bookshelves, mobile containers, etc. Do not use metal pads as they can scratch and leave marks on the floor. Castors must be equipped with soft, standard running surfaces. We recommend using floor coverings for office chairs to protect the floor from wear. Colored rubber, natural rubber or plastic glides, and castors, as well as dark tires (car, equipment or bike) could cause discoloration on the flooring. Therefore if possible, use only light, nonmigrating furniture glides, castors or tires.
- To protect the floor from dirt, a sufficiently large entrance covering must always be laid (e.g a doormat or carpet). We recommend protecting the floor in heavywear areas with appropriate floor protection mats (e.g polycarbonate mats).
- All floors are subject to minor color changes over time, mostly due to sunlight. To minimize color differences, we recommend that during the first months after installation, carpets should not be placed directly by windows or doors where strong sunlight falls on the floor.

Product design

1. UV Acrylic Top Coat
2. Natural wood covering
3. Wood-based powder layer
4. Välinge Composite™ core
5. Wood-based powder layer
6. Wood veneer backing layer



- Don't use floor steam cleaners since the steam might affect the otherwise water proof surface
- Don't use excessive water when cleaning, such as wet mopping with bucket
- Don't use strong cleaning agents without checking if it's suitable or recommended
- Don't use scouring powder as it might affect the lacquered surface

 Manufactured in Sweden
www.valingeflooring.com

LIMITED LIFETIME WARRANTY FOR STRUCTURAL DURABILITY
Välinge warrants the durability of the multilayer product structure relating to the pressing and fusing the single layers with one another. This means that these engineered hardwood floors will not delaminate when properly installed and maintained according to Välinge's installation and maintenance procedures, as enclosed with the floor.

woodura®

PATENTED SURFACE TECHNOLOGY



Installed with
5G® Fold Down

Care and maintenance instructions for Välinge hardened wood floors

Lacquered Välinge Hardened Wood Floors do not require any treatment after installation. It is recommended to clean the floor before using it.

AFTER INSTALLATION:

1. Use a microfiber dust pad to remove dust.
2. Clean the surface with a microfiber cleaning pad together with a Hardwood Floor Cleaner for lacquered floors (e.g Bona Hardwood Floor Cleaner).

DAILY CLEANING:

- Use mainly dry methods, such as vacuum cleaner, dust mop or microfiber mop.

REGULARLY CLEANING:

1. Clean the surface from dirt and debris with a dusting pad or by vacuuming.
2. Clean the surface with a microfiber cleaning pad together with a Hardwood Floor Cleaner for lacquered floors (e.g Bona Hardwood Floor Cleaner).
3. Spray the cleaner on the microfiber cleaning pad.
4. Mop the floor. Make sure the solution is absorbed within 1 minute.
5. When the microfiber pad gets too dirty; change pad and continue.
6. When finished; rinse the microfiber pad and put it in the washing machine on sanitary wash.
7. Do not use string mops or sponge mops, they leave streak marks and do not absorb the water enough.
8. **Note!** Use Hardwood Floor Cleaner specially developed for UV Acrylic Wear Layer Hardwood floors. Normal soap may form a coating on the surface which makes the floor more difficult to clean.

MAINTENANCE

You can use a Hardwood Wood Floor refresher to freshen up lacquered wooden floors (e.g Bona Hardwood Floor Refresher). Refresher is used to restore the surface of a degraded lacquered floor and gives a protective layer that simplifies cleaning and maintenance. The Refresher is not a substitute for refinish. **Note!** When using Hardwood Floor Refresher on lacquered floors the gloss value is increased. The floor to be treated should be clean and free from polish, wax and any grease stains. Do not use soap that can leave residues on the surface.

- Vacuum thoroughly and clean the floor with a microfiber cleaning pad and a Hardwood Floor Cleaner for lacquered floors.

The floor can now be treated with Hardwood Floor Refresher (e.g Bona Hardwood Floor Refresher).

- Spread out the Refresher with a microfiber mop.
- Allow the Refresher to dry on the floor for at least 60 minutes before you put the furniture back.
- Allow the floor to dry for a few hours before taking it in use.
- Before moving back heavier objects and carpets, the surface should be allowed to cure for at least 24 hours.
- Good ventilation and normal room temperature 68° F (20° C) shortens drying time.
- Be sure to maintain colored products in time, so that the colored surface does not get worn down.

STAIN REMOVAL:

Remove stains as quickly as possible as instructed below. No warranties apply if using strong stain removal agents in large amounts and/or rubbing the surface excessively.

Tip: A magic eraser melamine cleaning sponge usually works for the most common stains.

NOTE! Don't scrub too hard.

TYPE OF STAIN	REMOVED WITH
Asphalt, rubber, oil, shoe polish, soot and dried residue of chocolate or grease.	Bona Cleaner or Bona Deep Clean solution undiluted.
Crayons, lipstick, felttip pencil.	Ethanol mixed with water, mixing ratio 50/50
Candle wax, chewing gum.	Cooling spray or a plastic bag with ice cubes to freeze the chewing gum. Carefully remove the stain with a knife.
Blood, coffee, tea, soda drinks, wine.	Bona Cleaner or Bona Deep Clean solution undiluted.

RENOVATION:

The big advantage with Woodura flooring is that it needs no sanding down. If after a couple of years you do feel, that a freshen-up of the floor would be a good idea, we recommend the Bona Recoat System.

Renovation with the Bona Recoat System in four steps:

1. Clean the floor thoroughly
2. Sand down the floor using the Bona Diamond System
3. Vacuum up/wipe up sanding dust
4. Use a roller to apply Bona Traffic HD

It is only the top layer of lacquer that will be sanded down and then resealed with new lacquer. This removes cleaning product residue, marks and light scratches. The flooring is ready to use again the next day.

We strongly recommend that this is preformed by a skilled profession to get the best results. Please visit www.bona.com for more information.



Välinge Flooring Hardened Wood

Brushed UV coating

Level of use domestic: **EN ISO 10874** Class General Residential



Woodura®	Hardened Wood
Construction	Engineered wood surface w/cured wood composite core and wood backing
Surface finishing	UV cured acrylic

General properties	XL	XXL
Thickness (mm/inches)	11,3 mm / .445"	11,3 mm / .445"
Width (mm/inches)	206 mm / 8.1"	271 mm / 10.7"
Length (mm/inches)	2200 mm / 86.6"	2378 mm / 93.6"
Wear layer thickness (mm/inches)	0,6 mm / .02"	0,6 mm / .02"
Boards per box	4	3
m² per box / sqft per box	1,8 / 19.51	1,9 / 20.81
m² per pallet / sqft per pallet	87 / 937	92,8 / 999
Weight/ m² (kg / lbs)	11 / 24	11 / 24
Weight/ box (kg / lbs)	20,1 / 44.3	21,7 / 47.8

Classification and safety properties	Standard test method	Result
Fire resistance	EN 13501	Bfl-S1 (hardly flammable)
Smoke density	ASTM E662	316 Flaming / 255 non-flaming
Critical radiant flux	ASTM E648	Class I - 0.82 W / cm²
Thermal resistance	EN 12664 / 12667	R 0.07 (m² x K)/W
Thermal conductivity	ASTM C518	1.2472 Vlu in. / h ft² F
Formaldehyde emission	EN 717-1	E1 ≤ 0,1 ppm (typical value ≤ 0,05 ppm)
Carb Phase 2 Compliant	ASTM D6007-14	Yes
Brinell hardness	EN 1534	10 HB (average value)
Impact resistance	EN 14354	EC3
Thickness swell	EN 13329 / ISO 24336	5% Class 34 (<8%)
Taber abrasion resistance	EN 14354	>1000 revolutions*
Sound transmission loss (STC) 8" slab only	ASTM E336/E413	55
Impact isolation class (IIC) 8" slab only	ASTM E492/E989	55
Slip resistance (COF)	ANSI A137.1/A326.3	wet: 0.73 (average value)

Installation properties	
Installation method	Floating or glue down application
Installation instructions	Download from www.ValingeFlooring.com/downloads
Underlayment	Foam with CS > 60kPa & CC > 20 kPa (according to EN 16354)**
Care & maintenance instructions	Download from www.ValingeFlooring.com/downloads

Wall Panels/Wall Mount		
Surface burning characteristics for building materials	ASTM E84-19b	Class C (Type III)

* When tested on a flat surface ** For demanding applications

**Välinge woodura****DECLARATION OF PERFORMANCE**

DOP

VI004-21

1. Unique identification code of the product-type:

Veneer flooring according to EN 14354

2. Type, batch or serial number or any other element allowing identification of the construction product as required pursuant to Article 11(4):

Flooring with Woodura surface

3. Intended use or uses of the construction product, in accordance with the applicable harmonised technical specification, as foreseen by the manufacturer:

For use as floor covering in buildings (see EN 14342) according to the manufacturer's specifications.

4. Name, registered trade name or registered trade mark and contact address of the manufacturer as required pursuant to Article 11(5):

Välinge Innovation Sweden AB, Prästavägen 513, 263 65 Viken, Sweden

5. Where applicable, name and contact address of the authorised representative whose mandate covers the tasks specified in Article 12(2):

6. System or systems of assessment and verification of constancy of performance of the construction product as set out in Annex V:

System 3

7. In case of the declaration of performance concerning a construction product covered by a harmonised standard:

Name of the notified test laboratory, that has issued the certificate of conformity of the factory production control inspection reports and calculation reports (if relevant).

RISE Research Institutes of Sweden, NB 0402
Eurofins A/S, NB 2657

not applicable

Notified Body

certificate of constancy of performance

8. In case of the declaration of performance concerning a construction product for which a European Technical Assessment has been issued:

not applicable

9. Declared performance

Essential characteristics	Performance	Harmonised technical specification
Reaction to fire	Bfl-s1	EN 14342:2013
Content of Pentachlorophenol	5 ppm	EN 14342:2013
Formaldehyd Emissions	E1	EN 14342:2013
Slip resistance	NPD	EN 14342:2013
Electrical behavior (dissipative)	NPD	EN 14342:2013
Electrical behavior (conductive)	NPD	EN 14342:2013
Electrical behavior (antistatic)	NPD	EN 14342:2013
Thermal conductivity [W/mK]	0,16 W mK	EN 14342:2013
Water-tightness	NPD	EN 14342:2013

10. The performance of the product identified in points 1 and 2 is in conformity with the declared performance in point 9.
This declaration of performance is issued under the sole responsibility of the manufacturer identified in point 4.
Signed for and on behalf of the manufacturer by

Göran Ziegler, R&D Director

(name and function)

Viken, Sweden, 21 April 2021

(place and date of issue)

Välinge Innovation

Prästvägen 513, 263 65 Viken, SWEDEN

Phone: +46 42 23 78 15

(signature)

signature

Lifetime limited warranty for engineered wood floors with Woodura® surface technology



This warranty covers Välinge Flooring's (Välinge) engineered wood flooring with Woodura® Surface Technology purchased after ____2020 for residential interior use in the USA. The warranty extends to the first consumer purchase and the original installation only and expires upon transfer of the ownership of the house or apartment where the product is installed, or upon the resale, transfer or relocation (after installation) of the product. Coverage will be lost if the original purchaser fails to strictly follow all installation and maintenance instructions and recommendations as provided by Välinge to the consumer.

FREE FROM DEFECT IN MATERIAL AND WORKMANSHIP WARRANTY

Välinge warrants its first-grade engineered hardwood floors with Woodura® Surface Technology, in their manufactured condition, to be free from defect in material and workmanship in grading, dimension, profiling and assembly. Välinge warrants that your Välinge floor with Woodura® Surface Technology and the 5G® Dry™ installation system will not swell, cup, or crack due to normal cleaning practices (see the Care and Maintenance instructions for additional information).

The purchaser must carefully inspect the flooring panels before installing them in accordance with the installation instructions to be covered by this part of the limited warranty. Flooring panels that have been installed are considered as inspected and accepted by the purchaser under this limited warranty.

LIMITED LIFETIME WARRANTY FOR STRUCTURAL DURABILITY

Välinge warrants the durability of the multilayer product structure relating to the pressing and fusing the single layers with one another. This means that these engineered hardwood floors will not delaminate when properly installed and maintained according to Välinge's installation and maintenance procedures, as enclosed with the product.

LIMITED LIFETIME WARRANTY FOR WATERPROOFNESS

What does waterproof mean under this limited warranty?

Välinge engineered hardwood floor with Woodura® Surface Technology and the 5G® Dry™ installation system has undergone and passed testing according to current applicable industry standards to test the floor's (in particular the joints') resistance to moisture over time. This means that topical spills ("everyday household spills"), as long as the spill does not flow over the edge of the surface (edge of the room, cut boards, etc.), left for up to 24 hours, will not cause your Välinge engineered hardwood floor with Woodura® Surface Technology and the 5G® Dry™ installation system to crack or delaminate. There will be no swelling (i.e. less than 3 %) when the floor has been left to dry for 24 hours and the floor will suffer no visual defects due to the topical spill such as discoloration, change in finish or warping. To best ensure the floor's long-lasting condition however, it is recommended that any spillage is removed as soon as possible.

All sources of subfloor moisture should be remedied prior to installation. In case of standing water or flooding, Välinge engineered hardwood flooring with Woodura® Surface Technology and the 5G® Dry™ installation system will not act as a waterproofing barrier for the

subfloor and/or any surrounding structure. For example, casualty events involving water coming in contact with your floor or damages due to failures normally covered by homeowners insurance, including but not limited to flooding or standing water from leaky pipes, faucets or household appliances are excluded from this limited warranty or damage to the subfloor and/or surrounding structure that is caused by standing water or flooding. Damage resulting from mold and/or mildew growth due to prolonged exposure to moisture is not covered by this limited warranty.

LIMITED LIFETIME WARRANTY FOR RESIDENTIAL WEAR RESISTANCE

The Woodura® Surface Technology ensures a durable and wear resistant surface. Every plank is ready to install right out of the carton. There is no need for sanding or staining. With our Woodura® Surface Technology you are assured excellent durability and wear-ability.

Välinge warrants that the wear layer based on the Woodura® Surface Technology, including the veneer layer, will not wear through or peel off of the hardwood flooring, provided the floor is used under normal residential conditions and installed and maintained in accordance with the Installation and Care instructions, in each case as enclosed with the product.

Under this limited warranty, wear defects are considered as visible wear through the wear layer which cover a surface of at least 1 square inch.

WHAT IS NOT COVERED

Because all products with a wood surface undergo colour changes when exposed to UV-light from the sun, visual damage such as joints, changes in colour due to exposure to light and the deformation of individual planks caused by seasonal, room climate conditions are not covered by this warranty.

The surface coating (oil or lacquer) is a protective layer for the wooden wear layer underneath and is subject to normal wear. This warranty does not cover wear of the surface coating or any damage caused to the wear layer underneath caused by delayed or improper repair of the surface coating.

This warranty is only intended to cover floors used in what Välinge considers normal conditions, i.e., an indoor relative humidity level between 35% and 65%. Although flooring with Woodura® Surface Technology may tolerate shorter periods of extreme conditions, extended and frequently reoccurring exposure may cause cupping of individual planks.

The warranty does not cover any damage caused by incorrect treatment. In particular, the warranty does not cover damage resulting from sanding or use of other abrasive materials; damage caused from excessive exposure to moisture including but not limited to excessive wet mopping, spills and standing water; acts of God; damage resulting from weight or wear on the floor which is exceeding 500lbs/plank; damage caused by furniture and

other heavy pieces (including but not limited to pianos) not provided with protective furniture pads; mechanical damage (including without limitation reduction in gloss, marks, scuffs, scratches, gouges, dents or cuts) from sharp objects (including without limitation pets' claws, spikes or high heeled shoes), or damage resulting from insect infestation.

The floor with Woodura® Surface Technology must further be properly cared for and maintained according to the care instructions enclosed with the product. If the installation or care instructions are missing and/or incomplete, the purchaser is obligated to request this information from Välinge Flooring directly or at www.valingeflooring.com before installing the flooring.

The above statement of warranty is the only warranty provided by Välinge for its flooring products with Woodura® Surface Technology and the 5G® Dry™ installation system. This warranty is exclusive and in lieu of any and all other warranties whether oral or written, or express or implied.

In no event shall Välinge be liable or in any manner responsible for any claim, including but not limited to compensation claims for the removal/fitting or installation of the flooring, costs for furniture removal, substrate materials and supplies, any loss or damage arising from the purchase, use or inability to use its products or from any form of special, indirect, incidental, or consequential damages, including, without limitation, lost profits, emotional, multiple, punitive or exculpatory damages (see below) or attorneys' fees, even if Välinge or its representatives have been advised of the possibility of such damages before sale.

HOW TO GET WARRANTY SERVICE

Each panel of Välinge's flooring with Woodura® Surface Technology is carefully inspected by our quality control personnel prior to leaving our factory to ensure they are defect free. The floor is expected to perform in what Välinge considers to be normal applications and conditions.

In the unlikely event that the waterproofness, the wear layer, the bonding or other structural aspect of a flooring panel with Woodura® Surface Technology fails, the purchaser must contact the authorized Välinge Flooring dealer from which the original purchase was made no later than 30 days after discovering the defect but within the time period of the applicable limited warranty.

The following items must be presented to the authorized Välinge Flooring dealer for a claim under this limited warranty to be considered:

1. *Valid proof of purchase in the form of a sales receipt or other documents which establish proof of purchase; and*
2. *A description of the problem and/or a photograph/sample that clearly shows the warranty problem.*

Välinge's authorized dealer may inspect the product on site and provide its own conclusions for the claim. Välinge reserves the right to and must be enabled to inspect the product where it is installed for this warranty to apply. Välinge may exercise this right within its own discretion.

WHAT VÄLINGE WILL DO SHOULD YOU NEED WARRANTY SERVICE:

If your claim is accepted under this limited warranty, Välinge will authorize your dealer to, at Välinge's option, repair or replace the affected flooring material. If the flooring was professionally installed, Välinge will pay the reasonable labor costs for the professional installer to perform the replacement or repair of the flooring for a period of five (5) years from the date of the original purchase. If the installed product is no longer available, Välinge will authorize your dealer to replace the affected floor with another style of equal value.

The foregoing reflect the only remedies available under this limited warranty. In no event will Välinge be liable for any incidental, consequential or punitive damages.

Any claim under the warranty must be made within 30 days of the date upon which the defect first became known to the purchaser.

HOW STATE LAW APPLIES

This warranty gives specific legal rights. You may have other rights which may vary from state

to state. Some states do not allow the exclusion or limitation of implied warranties or incidental, consequential, emotional distress or punitive damages and in such event, the exclusions and limitations set forth above shall be construed and enforced to the fullest extent possible by the laws of any such state. Accordingly, some of the above limitations may not apply to you.

This Warranty is governed by the laws of Sweden and any action or proceeding arising out of this warranty shall be exclusively tried by the Arbitration Institute of the Stockholm Chamber of Commerce in accordance with their Rules for Expedited Arbitration. The seat shall be New York City, USA.

If any product to which this Limited Warranty applies is a consumer product under the Magnuson-Moss Warranty Act (15 U.S.C.A. §2301, et seq.) or other applicable law, the foregoing requirements for binding arbitration and disclaimer of implied warranties shall not apply, and such implied warranties and remedies shall apply as provided under applicable law.





2G®, 5G® and Woodura® are trademarks for patented technologies – invented, registered and owned by Välinge Innovation AB. Use of the marks or technologies is under licence.



valingeflooring.com